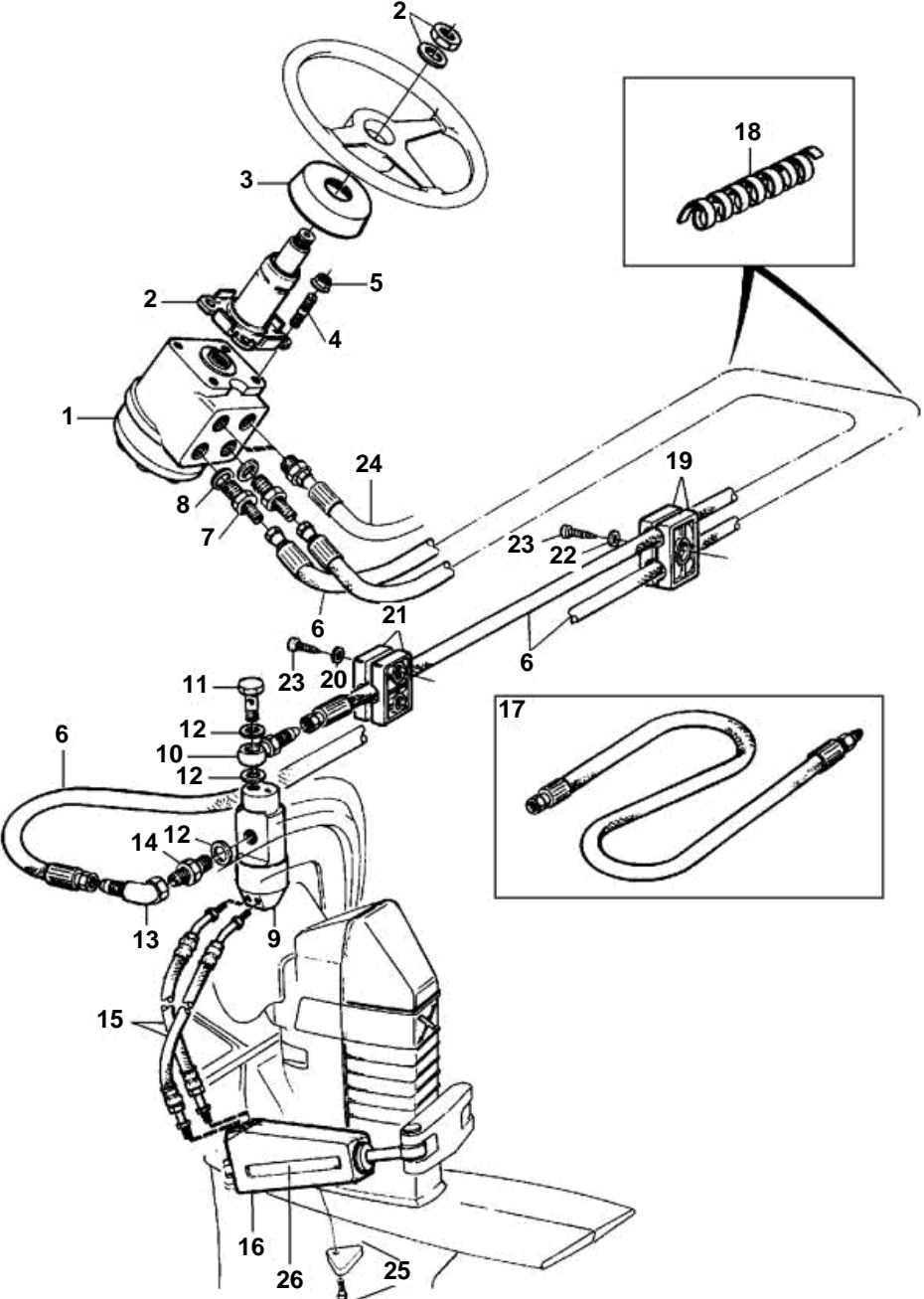


DPX - XACT™ STEERING & STEERING CYLINDERS (SINGLE INSTALLATION)



Upd: 22 NOV 2005

GR950363

7797260 - - 0-0029



NC PJX-C, PJX-S, SX-C1, SX-CT1, SX-RT1, DP-S, DP-C1, DP-D1, DPX-s, Xact™ STEERING, HS1A

DPX - XACT™ STEERING & STEERING CYLINDERS (SINGLE INSTALLATION)

REF	PART NO.	QTY	DESCRIPTION	NOTES
1	872155	1	Control unit	
2	872157	1	Retainer	
3	873357	1	Cover	
4	924085	4	Stud	
5	971095	4	Nut	
6	872158	2	Hose, L=6000 mm	
7	873340	2	Nipple	
8	873341	2	Washer	
9	872956	1	Grommet	
10	873325	1	Banjo nipple	
11	873326	1	Hollow screw	
12	873327	3	Washer	
13	873328	1	Elbow nipple	
14	873329	1	Nipple	
15	872593	4	Hose	
16	873231	2	Steering cylinder	Mounted on intermediate housing of DPX drive unit
17	872169	1	Hydraulic hose, L =1000 mm	
18	873331	1	Coil, L = 500 mm	
19	873335	1	Clamp	
20	873337	1	Washer	
21	873336	1	Clamp	
22	873338	1	Washer	
23	873339	3	Screw	
24	872158	2	Hose, For servo pumps	
25	872793	2	Zinc anode kit	
	872675	2	· Zinc anod	
	963683	2	· Screw	
26	872965	2	Decal, Steering cylinder	